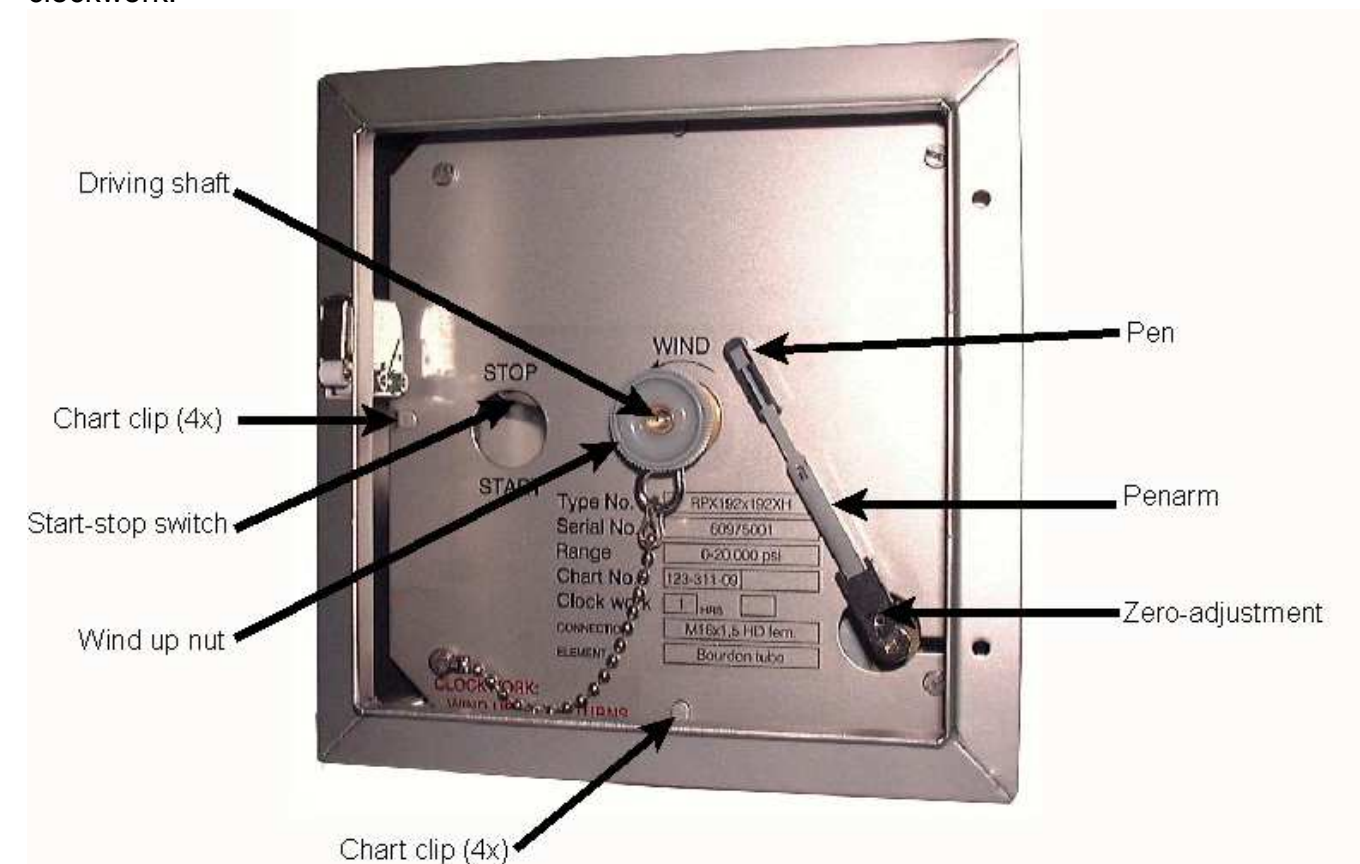


OPERATING MANUAL CHART RECORDERS

A recorder is being used to record the pressure or temperature or a combination of two pressures, two temperatures or one temperature and one pressure in a process over a certain period of time. A mechanical clockwork drives the chart. A disposable felt pen is mounted on the pointer arm. The read pressure is written on the chart.

Recorders are available in 192x192mm, 280x280mm, 380x380mm and 463x335mm. The available chart diameters are 163mm, 223mm and 300mm.

Recorders are also available with battery driven clockworks, electric clockworks and mechanical operated clockworks with two speeds e.g. 24 hrs/7 days. Depending on the model the recorder can be equipped with a start/stop button to operate the clockwork.



Above is shown the important parts required to operate the recorder properly. An extra dial with pointer is available as an option. Also other colour fibre pens can be ordered.

Installing a chart:

Standard clockwork



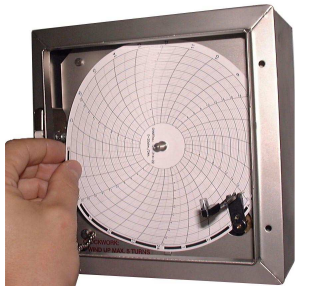
Open the recorder door and remove the knob of the clockwork by turning it clockwise.



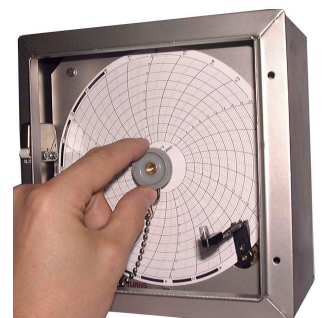
Switch the start/stop button to start.



Lift the pen arm gently in a 90 degree angle.



Put the recorder chart in the recorder.



Return the knob of the clockwork by turning it anti-clockwise. **Wind up max. 5 turns!**

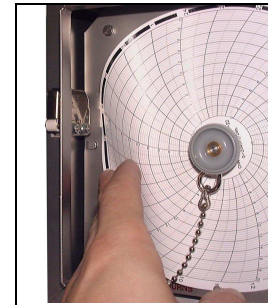
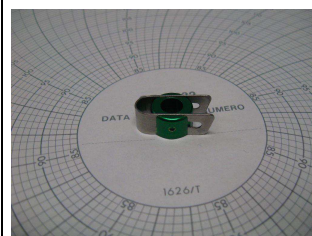
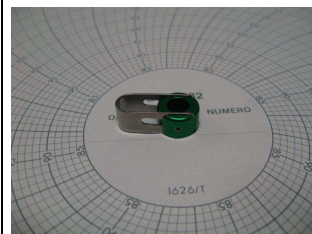
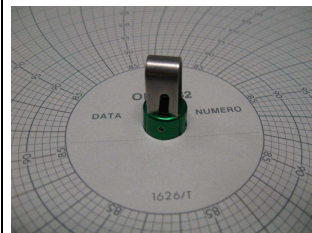
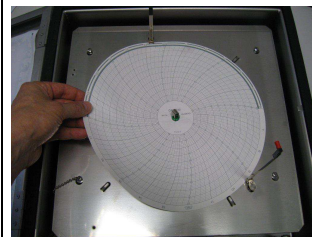
Optional:
Sonceboz clockwork



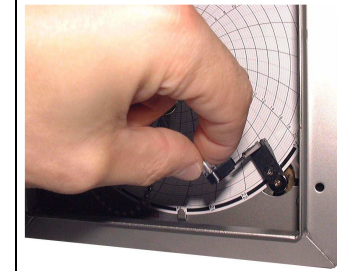
Set the paperclip vertical.



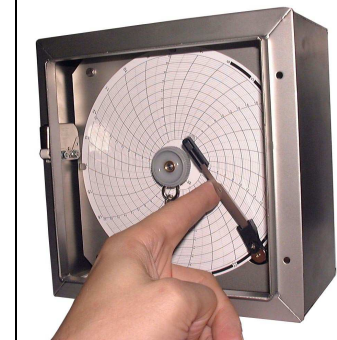
Set the speed with a screwdriver.



Make sure that the chart is placed under the chart clips
4 x for case 192x192 mm
3 x for case 280x280 mm
4 x for case 380x380 mm
4 x for case 463x335 mm
on the lower panel.



Remove the protective cover of the recorder pen.



Put the pen arm back on the chart.



Changing the battery



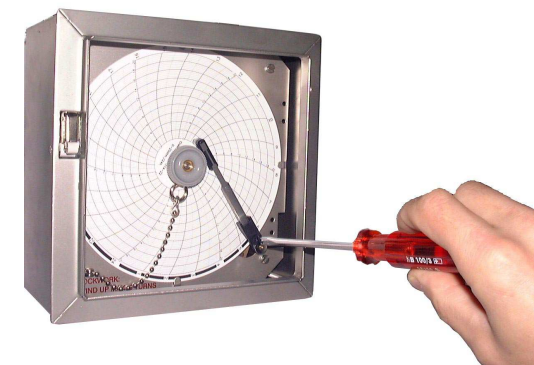
Battery 1.5 V (LR14; "C" MN1400)



Example of disposable felt pen with protective cover



Removing the pen from the pen arm.



Zero-adjustment: Turn the screw gently. **At normal usage zero-adjustment is not required.**